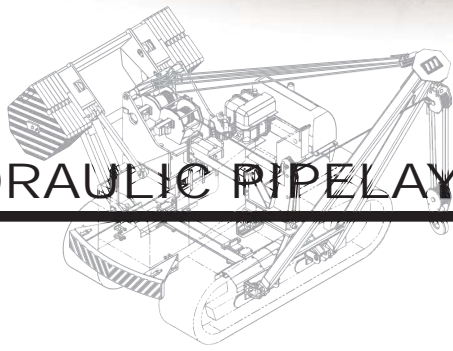




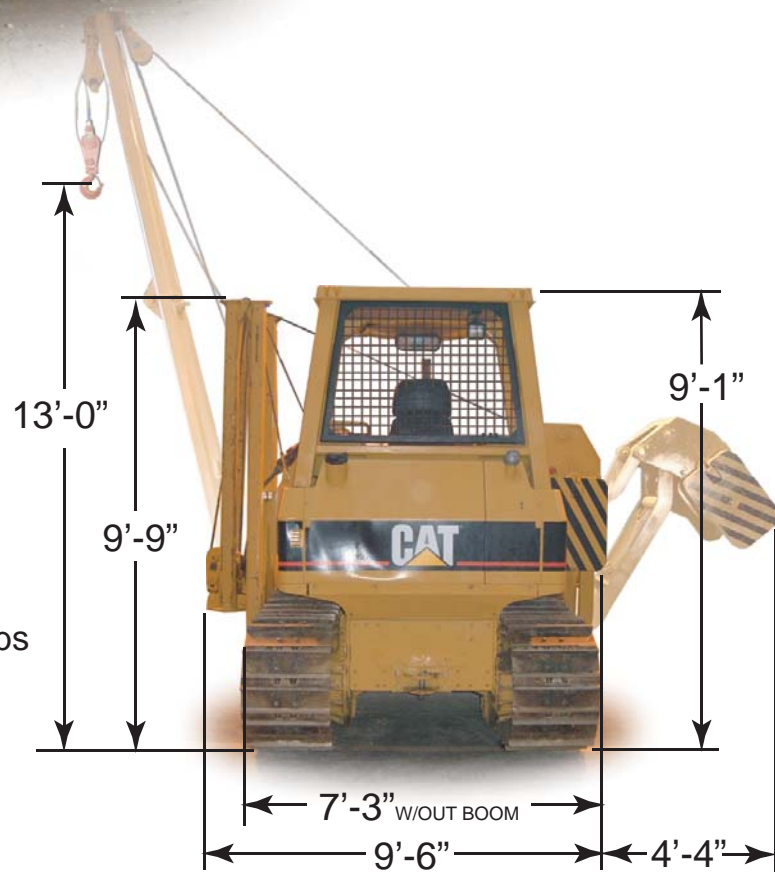
M520c
for
CAT D5G XL



HYDRAULIC PIPELAYERS



SYSTEM PRESSURE	2,900 psi
PUMP CAPACITY @ 2,400 rpm	17.6 gpm
LIFT CAPACITY @ 4'	20,000 lbs
HOOK SPEED	30 ft/min
EXTENDIBLE CWT SEGMENTS	2 @ 1,120 lbs
DRAW WORKS & BOOM	6,200 lbs
SHIPPING WEIGHT	25,830 lbs



WINCHES - SINGLE SPEED PLANETARY
w/ DUAL BRAKING SYSTEM

BOOM - 15' FOLDING BOOM @ FULL EXTENSION

WIRE ROPE - LOAD (3 PART) 9/16" dia. x 85' lg. BOOM (2 PART) 1/2" dia. x 52' lg.