

## M550c

### Lifting Capacity

- Maximum Lift: 50,000 lb (22,680 kg)\*
- Maximum Load: 42,500 lb (19,278 kg)\*
- Maximum Working Load: 30,000 lb (13,608 kg)\*

\*@ 4 ft overhang

### Boom and Blocks

- Standard Boom: 20 ft (6.1 m)
- Boom Line Parts: 3
- Load Line Parts: 3
- Typical Hook Speed (HI/LOW): 45/23 ft/min (13.7/7 m/min)

### Hydraulic System

- Directional Control Valve: 3-Section, Load Sense, Pressure Compensated w/ Pilot Controls
- Maximum Operating Pressure: 3,000 psi (207 bar)
- Maximum Allowable Flow: 45 gpm (170 l/min)

### Winches

#### Boom Winch

- Planetary, single-speed, dual brake system
- Wire rope installed: 150 ft (45.7 m)
- Max. cable capacity: 368 ft (112 m)
- Wire Rope Diameter: 5/8 in (16 mm)\*

#### Load Winch

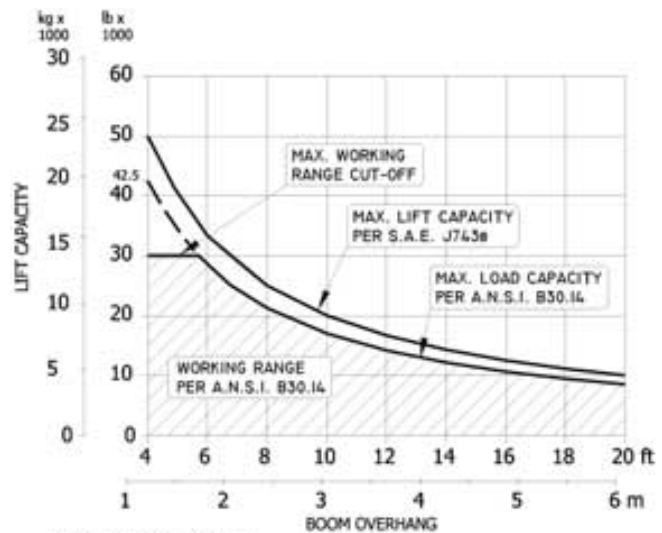
- Planetary, two-speed, dual brake system
- Wire rope installed: 150 ft (45.7 m)
- Max. cable capacity: 368 ft (112 m)
- Wire Rope Diameter: 5/8 in (16 mm)\*
- \* Maximum breaking strength: 41,200 lb (18,688 kg)

### Weights

- Removable counterweight segments: 6 @ 896 lb (406 kg) each
- Total extendible counterweight (segments and frames): 6,940 lb (3,148 kg)
- Total sideboom attachment weight: 15,000 lb (6,804 kg)



## M550c Hydraulic Sideboom Attachment



**SPECIFIED EQUIPMENT:**  
 5/8" (15.9 mm) WIRE ROPE, 41,200 lbs (18,688 kg) MIN. BREAKING STRENGTH  
 3 PART LOAD LINE, 3 PART BOOM LINE,  
 6,940 lbs (3,148 kg) OF EXTENDIBLE COUNTERWEIGHT

**M550c****Features**

- Tubular A-Frame boom engineered for exceptional support at maximum lift capacity and easy detachment.
- Three-lever hydraulic control system allows simultaneous control of load and boom functions. The controls are easy to operate and require minimal operator training.
- Hydraulic boom stop automatically prevents system over travel and damage to boom.
- System employs tractor's existing hydraulic pump, filter and reservoir for convenience of replacement parts and maintenance.
- Sideboom features quick release hinge pins for easy boom removal and maintenance
- Hydraulically operated, four-bar linkage counterweight system adds maximum stability and lifting capacity. Low, compact design provides balanced weight distribution for optimum operating control and excellent visibility.
- Optional multi-axis, hydraulic joystick control.
- Optional remote hydraulic pilot controls.

**Tractor Models**

- Komatsu D61EX - 12
- Komatsu D61EX - 15

Midwestern's sidebooms are manufactured, installed, and tested to meet the requirements outlined in ASME B30.14-2010 for sideboom tractors. Capacity ratings are tested and rated per specifications and procedures outlined in ISO 8813-1992 for lift capacities of side boom tractors. All Midwestern structural welding complies with the American Welding Society (AWS) Code Welding Earthmoving, Construction, and Agricultural Equipment D14.3/D14.3M:2010.

---

**Notes**